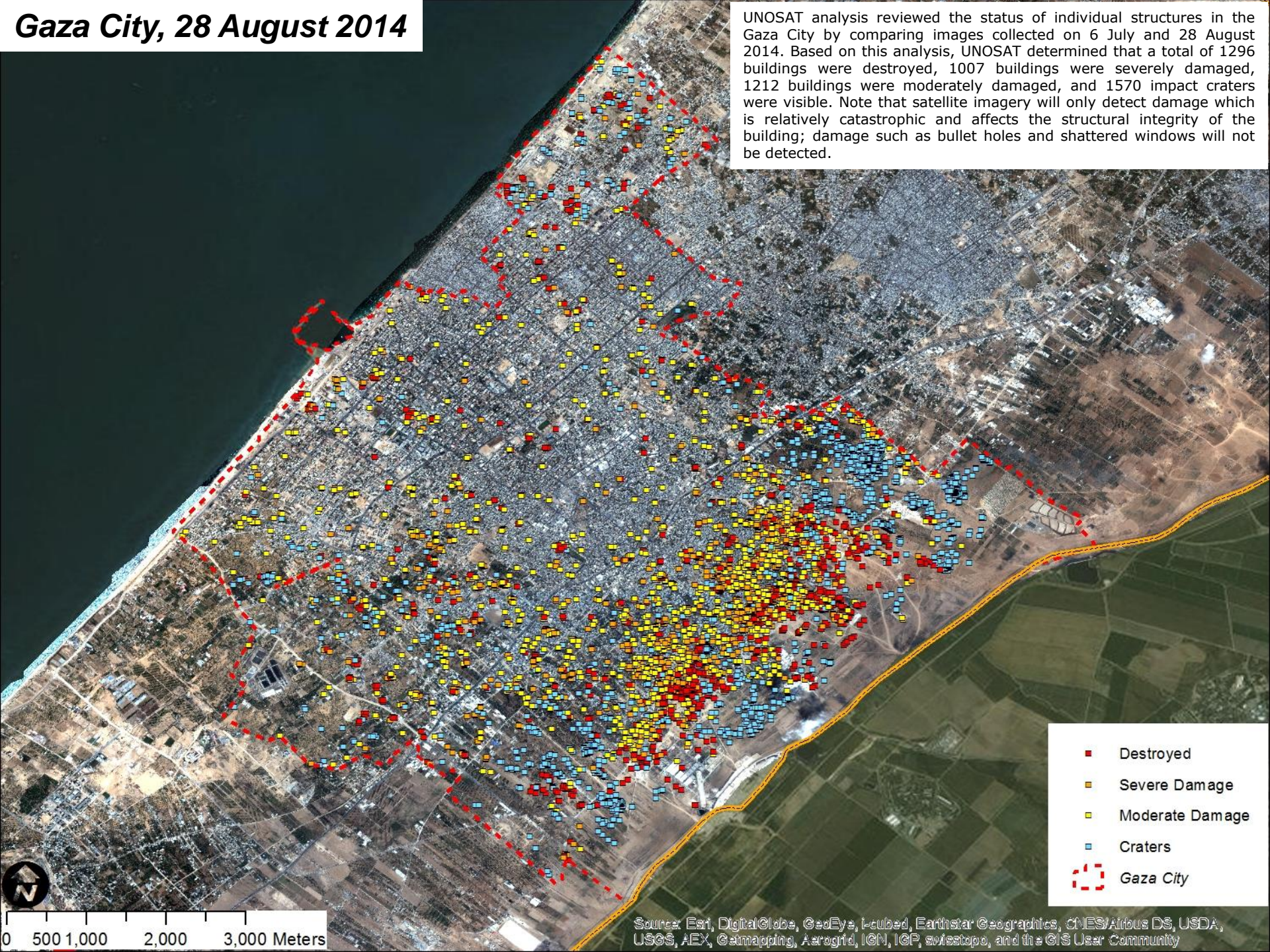


Gaza City, 28 August 2014

UNOSAT analysis reviewed the status of individual structures in the Gaza City by comparing images collected on 6 July and 28 August 2014. Based on this analysis, UNOSAT determined that a total of 1296 buildings were destroyed, 1007 buildings were severely damaged, 1212 buildings were moderately damaged, and 1570 impact craters were visible. Note that satellite imagery will only detect damage which is relatively catastrophic and affects the structural integrity of the building; damage such as bullet holes and shattered windows will not be detected.



- Destroyed
- Severe Damage
- Moderate Damage
- Craters
- ⬡ Gaza City

Source: Esri, DigitalGlobe, GeoEye, i-cubed, Earthstar Geographics, CNES/Airbus DS, USDA, USGS, AEX, Geomapping, AeroGRID, IGN, IGP, swisstopo, and the GIS User Community